

# WORKHORSE

WRK0	YELLOW
WRK1	GREEN
WRK1D	DARK GREEN
WRK2R	ROYAL BLUE
WRK2D	DARK BLUE
WRK3	RED
WRK5	CREAM



WRK6	ORANGE
WRK8	GOLD
WRK9	WHITE
WRK19V	VIOLET
WRK27	BURGUNDY
WRK30	BLACK
WRK52	TEAL

#### Imprint Info:

- 1 color imprint

#### Production:

- Standard 5 - 7 working days.

#### Packaging/Shipping:

- Bulk Packed, 18 lb./M

#### Core Degree:

- #2 core only

Only **.15**

(C)  
Min 150  
Setup Charge \$40.00(G)

\$20.00(G) Setup Charge on exact repeat orders placed within 365 days of original order.

Imprint Area Workhorse: 13/16" x 4-1/2"

# QUARTER

QTR1	White/Green
QTR2	White/Blue
QTR3	White/Red
QTR30	White/Black
QTR10/9	Yellow/White
QTR1D/9	Dark Green/White
QTR1L/9	Spring Green/White



QTR2D	Navy/White
QTR2L/9	Light Blue/White
QTR3/9	Red/White
QTR3L/9	Pink/White
QTR6/9	Orange/White
QTR19/9	Purple/White
QTR30/9	Black/White

#### Imprint Info:

- 1 color imprint

#### Production:

- Standard 5 - 7 working days.

#### Packaging/Shipping:

- Bulk Packed, 20 lb./M

#### Point Style/Ink Colors:

- Medium 1.0mm point, blue ink.

Only **.29**

(C)  
Min 150  
Setup Charge \$40.00(G)

\$20.00(G) Setup Charge on exact repeat orders placed within 365 days of original order.

Imprint Area Quarter: 3/4" x 1-1/2"

# APPALOOSA



*The Plantation Room Company*

APPALOOSA  
BREEDERS TRUST

#### Imprint Info:

- 1 color imprint

#### Production:

- Standard 5 - 7 working days.

#### Packaging/Shipping:

- Bulk Packed, 33lb./M

#### Core Degree:

- #2 core only.

Only **.30**

(C)  
Min 150  
Setup Charge \$40.00(G)

\$20.00(G) Setup Charge on exact repeat orders placed within 365 days of original order.

Imprint Area Appaloosa Carpenter: 11/32" x 5-1/2"

APP0	Yellow
APPON	Safety Yellow
APP1N	Safety Green
APP3	Red
APP6	Orange
APP9	White
APP15	Neon Orange
APP20	Natural
APP30	Black



# SHADOW

ITEM# SHDW



**Black Matte Pencil With A Black Ferrule And A Black Eraser**

**Imprint Info:**

- 1 color imprint. White, gold, silver, yellow, orange imprint colors recommended.

**Production:**

- Standard 5 - 7 working days.

**Packaging/Shipping:**

- Bulk Packed, 18lb./M

**Core Degree:**

- #2 core only.

Only **.24**

(C)  
Min 150  
Setup Charge \$40.00(G)

\$20.00(G) Setup Charge on exact repeat orders placed within 365 days of original order.

Imprint Area Shadow: 13/16" x 4-1/2"

# CLYDESDALE



**Imprint Info:**

- 1 color imprint

**Production:**

- Standard 5 - 7 working days.

**Packaging/Shipping:**

- Bulk Packed, 25 lb./M

**Point Style/Ink Colors:**

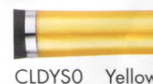
- Medium 1.0mm point, blue or black ink available (Black ink if no ink color is specified).

Only **.43**

(C)  
Min 150  
Setup Charge \$40.00(G)

\$20.00(G) Setup Charge on exact repeat orders placed within 365 days of original order.

Imprint Area Clydesdale: 5/8" x 1-1/4"



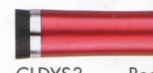
CLDYS0 Yellow



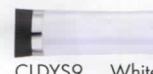
CLDYS1 Green



CLDYS2 Blue



CLDYS3 Red



CLDYS9 White



CLDYS19 Purple

# PALOMINO



**Imprint Info:**

- 1 color imprint

**Production:**

- Standard 5 - 7 working days.

**Packaging/Shipping:**

- Bulk Packed, 18 lb./M

**Core Degree:**

- #2 core only

Only **.25**

(C)  
Min 150  
Setup Charge \$40.00(G)

\$20.00(G) Setup Charge on exact repeat orders placed within 365 days of original order.

Imprint Area Palomino: 13/16" x 4-1/2"



PAL1 Green



PAL2 Blue



PAL3 Red



PAL7 Silver



PAL8 Gold



PAL19 Purple



PAL30 Black



PALRF Rainbow Foil

# LUSITANO



## Imprint Info:

- 1 color imprint.

## Packaging/Shipping:

- Bulk Packed, 20 lb./M

## Point Style/Ink Colors:

- Medium 1.0mm ballpoint, black ink.

Only **.35**

(C)  
Min 150  
Setup Charge \$40.00(G)

Imprint Area Lusitano: 9/16" x 2"

\$20.00(G) Setup Charge on exact repeat orders placed within 365 days of original order.

LUS0	Yellow
LUS1D	Dark Green
LUS2D	Dark Blue
LUS2L	Light Blue
LUS3	Red
LUS6	Orange
LUS19	Purple
LUS30	Black

# RECYCLER



**MADE FROM 75% POST CONSUMER MATERIALS**

Only **.19**

(C)  
Min 150  
Setup Charge \$40.00(G)

\$20.00(G) Setup Charge on exact repeat orders placed within 365 days of original order.

Imprint Area Recycler: 13/16" x 4-1/2"

## Imprint Info:

- 1 color imprint.

## Packaging/Shipping:

- Bulk Packed, 18 lb./M

## Core Degree:

- #2 core only.



Recycler sharpened.  
Taper reveals recycled  
newsprint!

REC0	Yellow
REC1	Green
REC2	Blue
REC3	Red
REC9	White

# UNICORN



Only **.19**

(C)  
Min 150  
Setup Charge \$40.00(G)

\$20.00(G) Setup Charge on exact repeat orders placed within 365 days of original order.

Imprint Area Unicorn: 13/16" x 4-1/2"

## Imprint Info:

- 1 color imprint. White or black imprint color recommended.
- Note: White ink does not print on Yellow and will not be included in an assortment with white copy.

## Packaging/Shipping:

- Bulk Packed, 18lb./M

## Core Degree:

- #2 core only.

UNI0	Yellow
UNI1	Green
UNI3	Pink
UNI6	Orange
UNI2	Blue